



INTERCONNECTION FACILITIES STUDY REPORT

GEN-2025-SR22

Published November 2025

By SPP Generator Interconnections Dept.

REVISION HISTORY

DATE OR VERSION NUMBER			AUTHOR	CHANGE DESCRIPTION
11/18/2025			SPP	Initial draft report issued.

CONTENTS

Revision History	i
Summary	1
Introduction	1
Phase(s) of Interconnection Service	1
Compensation for Amounts Advanced for Network Upgrade(s)	1
Interconnection Customer Interconnection Facilities	2
Transmission Owner Interconnection Facilities and Non-Shared Network Upgrade(s)	3
Shared Network Upgrade(s)	4
Contingent Network Upgrade(s)	5
Affected System Upgrade(s)	6
Conclusion	7
Appendices	8
A: Transmission Owner’s Interconnection Facilities Study Report and Network Upgrades Report(s)	9

SUMMARY

INTRODUCTION

This Interconnection Facilities Study (IFS) for Interconnection Request GEN-2025-SR22 is for a 100 MW generating facility located in Oklahoma County, OK. The Interconnection Request was studied in the Surplus Impact Study for ERIS. The Interconnection Customer's requested in-service date is 05/31/2028.

The interconnecting Transmission Owner, Oklahoma Gas and Electric (OG&E), performed a detailed IFS at the request of SPP. The full report is included in Appendix A. SPP has determined that full Interconnection Service will be available after the assigned Transmission Owner Interconnection Facilities (TOIF), Non-Shared Network Upgrades, Shared Network Upgrades, Contingent Network Upgrades, and Affected System Upgrades that are required for full interconnection service are completed.

The primary objective of the IFS is to identify necessary Transmission Owner Interconnection Facilities, Network Upgrades, other direct assigned upgrades, cost estimates, and associated upgrade lead times needed to grant the requested Interconnection Service.

PHASE(S) OF INTERCONNECTION SERVICE

It is not expected that Interconnection Service will occur in phases. However, full Interconnection Service will not be available until all Interconnection Facilities and Network Upgrade(s) can be placed in service.

COMPENSATION FOR AMOUNTS ADVANCED FOR NETWORK UPGRADE(S)

FERC Order ER20-1687-000 eliminated the use of Attachment Z2 revenue crediting as an option for compensation. The Incremental Long Term Congestion Right (ILTCR) process will be the sole process to compensate upgrade sponsors as of July 1st, 2020.

INTERCONNECTION CUSTOMER INTERCONNECTION FACILITIES

The Generating Facility is proposed to consist of thirty-one (31) Cummins C3250 D6e 3.2504 MW Diesel Generators for a total generating nameplate capacity of 100.76 MW which exceeds the requested Surplus Interconnection Service of 100 MW. The sum of the output from the combined generation of GEN-2018-029 and GEN-2025-SR22 are limited at the Point of Interconnection to 100 MW.

The Interconnection Customer's Interconnection Facilities to be designed, procured, constructed, installed, maintained, and owned by the Interconnection Customer at its sole expense include:

- 34.5 kV underground cable collection circuits;
- The project will connect to the existing 34.5 kV collector substation to the Point of Interconnection (POI) at the 138 kV bus at the existing Transmission Owner substation (Horseshoe Lake 138 kV) that is owned and maintained by Transmission Owner;
- All transmission facilities required to connect the Interconnection Customer's substation to the POI;
- Equipment at the Interconnection Customer's substation necessary to maintain a composite power delivery at continuous rated power output at the high-side of the generator substation at a power factor within the range of 95% lagging and 95% leading in accordance with Federal Energy Regulatory Commission (FERC) Order 827. The Interconnection Customer may use inverter manufacturing options for providing reactive power under no/reduced generation conditions. The Interconnection Customer will be required to provide documentation and design specifications demonstrating how the requirements are met; and,
- All necessary relay, protection, control and communication systems required to protect Interconnection Customer's Interconnection Facilities and Generating Facilities and coordinate with Transmission Owner's relay, protection, control and communication systems.

TRANSMISSION OWNER INTERCONNECTION FACILITIES AND NON-SHARED NETWORK UPGRADE(S)

To facilitate interconnection, the interconnecting Transmission Owner will perform work as shown below necessary for the acceptance of the Interconnection Customer's Interconnection Facilities.

Table 1 and **Table 2** list the Interconnection Customer's estimated cost responsibility for Transmission Owner Interconnection Facilities (TOIF) and Non-Shared Network Upgrade(s) and provides an estimated lead time for completion of construction. The estimated lead time begins when the Generator Interconnection Agreement has been fully executed.

Table 1: Transmission Owner Interconnection Facilities (TOIF)

Transmission Owner Interconnection Facilities (TOIF)	Total Cost Estimate (\$)	Allocated Percent (%)	Allocated Cost Estimate (\$)
<u>Transmission Owner's Interconnection (TOIF):</u> Add revenue metering at the 34.5kV injection point for the Thermal Diesel generating	\$80,000	100%	\$80,000
<u>Estimated Lead Time: 6 Months</u>			
Total	\$80,000		\$80,000

Table 2: Non-Shared Network Upgrade(s)

Non-Shared Network Upgrades Description	ILTCR	Total Cost Estimate (\$)	Allocated Percent (%)	Allocated Cost Estimate (\$)
<u>None</u>		\$0	100.00%	\$0
Total		\$ 0		\$ 0

SHARED NETWORK UPGRADE(S)

The Interconnection Customer’s share of costs for Shared Network Upgrades is estimated in **Table 3** below.

Table 3: Interconnection Customer Shared Network Upgrade(s)

Shared Network Upgrades Description	ILTCR	Total Cost Estimate (\$)	Allocated Percent (%)	Allocated Cost Estimate (\$)
None	Eligible	\$0	0%	\$0
Total		\$ 0		\$ 0

All studies have been conducted assuming that higher-queued Interconnection Request(s) and the associated Network Upgrade(s) will be placed into service. If higher-queued Interconnection Request(s) withdraw from the queue, suspend or terminate service, the Interconnection Customer’s share of costs may be revised. Restudies, conducted at the customer’s expense, will determine the Interconnection Customer’s revised allocation of Shared Network Upgrades.

CONTINGENT NETWORK UPGRADE(S)

Certain Contingent Network Upgrades are **currently not the cost responsibility** of the Interconnection Customer but will be required for full Interconnection Service.

Table 4: Interconnection Customer Contingent Network Upgrade(s)

Contingent Network Upgrade(s) Description	Current Cost Assignment	Estimated In-Service Date
None	\$0	

Depending upon the status of higher- or equally-queued customers, the Interconnection Request’s in-service date is at risk of being delayed or Interconnection Service is at risk of being reduced until the in-service date of these Contingent Network Upgrades.

AFFECTED SYSTEM UPGRADE(S)

To facilitate interconnection, the Affected System Transmission Owner will be required to perform the facilities study work as shown below necessary for the acceptance of the Interconnection Customer’s Interconnection Facilities. **Table 5** displays the current impact study costs provided by either MISO or AECI as part of the Affected System Impact review. The Affected System facilities study could provide revised costs and will provide each Interconnection Customer’s allocation responsibilities for the upgrades.

Table 5: Interconnection Customer Affected System Upgrade(s)

Affected System Upgrades Description	Total Cost Estimate (\$)	Allocated Percent (%)	Allocated Cost Estimate (\$)
<u>None</u>	\$0	0%	\$0
Total	\$ 0		\$ 0

CONCLUSION

After all Interconnection Facilities and Network Upgrades have been placed into service, Interconnection Service for 100 MW can be granted. Full Interconnection Service will be delayed until the TOIF, Non-Shared NU, Shared NU, Contingent NU, Affected System Upgrades that are required for full interconnection service are completed. The Interconnection Customer’s estimated cost responsibility for full interconnection service is summarized in the table below.

Table 6: Cost Summary

Description	Allocated Cost Estimate
Transmission Owner Interconnection Facilities Upgrade(s)	\$80,000
Non-Shared Network Upgrade(s)	\$ 0
Shared Network Upgrade(s)	\$ 0
Affected System Upgrade(s)	\$ 0
Total	\$80,000

Use the following link for Quarterly Updates on upgrades from this report: <https://spp.org/spp-documents-filings/?id=18641>

A draft Generator Interconnection Agreement will be provided to the Interconnection Customer consistent with the final results of this IFS report. The Transmission Owner and Interconnection Customer will have 60 days to negotiate the terms of the GIA consistent with the SPP Open Access Transmission Tariff (OATT).

APPENDICES

**A: TRANSMISSION OWNER'S INTERCONNECTION FACILITIES STUDY
REPORT AND NETWORK UPGRADES REPORT(S)**

See next page for the Transmission Owner's Interconnection Facilities Study Report and Network Upgrades Report(s).



FACILITY STUDY

for

Generation Surplus Request 2025-SR22

100MW Thermal Generating Facility
Oklahoma County
Oklahoma

November 6, 2025

Rhiannon Hensley
Senior Engineer
Transmission Planning
OG&E Electric Services

Summary

Pursuant to the tariff and at the request of the Southwest Power Pool (SPP), Oklahoma Gas and Electric (OG&E) performed the following Facility Study to satisfy the Facility Study Agreement executed by the requesting customer for SPP Generation Interconnection request GEN-2025-SR22. The request for interconnection was placed with SPP in accordance SPP's Open Access Transmission Tariff, which covers new generation interconnections on SPP's transmission system. The requirements for interconnection consist of adding revenue metering at the Interconnection Customer's collector substation for the purpose of separating the surplus resource GEN-2025-SR22 from the original GEN-2018-029 resource. The total cost for OKGE to install meters for the Surplus Generating Facility, at the customer's collector substation, is estimated at **\$80,000**.

Table of Contents

Table of Contents	3
Introduction	4
Interconnection Facilities	5
Interconnection Costs	6
One-Line diagram of Interconnection	7

Introduction

The Southwest Power Pool has requested a Facility Study for the purpose of interconnecting a Thermal surplus generating facility within the service territory of OG&E Electric Services (OKGE) in Oklahoma County, Oklahoma. The proposed 34.5kV point of metering is at the existing generating facility in Oklahoma County. This substation is owned by Ringer Grid, LLC. The cost for adding a new 34.5kV meter to the generating facility, is estimated at **\$80,000**.

Interconnection Facilities

The primary objective of this study is to identify attachment facilities. The requirements for interconnection consist of adding metering to the surplus generating facility. This 34.5kV addition shall be constructed and maintained by OKGE.

The total cost for OKGE to add a new 34.5kV meters at the generating facility, is estimated at **\$80,000**.

This Facility Study does not guarantee the availability of transmission service necessary to deliver the additional generation to any specific point inside or outside the Southwest Power Pool (SPP) transmission system. The transmission network facilities may not be adequate to deliver the additional generation output to the transmission system. If the customer requests firm transmission service under the SPP Open Access Transmission Tariff at a future date, Network Upgrades or other new construction may be required to provide the service requested under the SPP OATT.

The costs of interconnecting the facility to the OKGE transmission system are listed in Table 1.

Short Circuit Fault Duty Evaluation

It is standard practice for OG&E to recommend replacing a circuit breaker when the current through the breaker for a fault exceeds 100% of its interrupting rating with re-closer de-rating applied, as determined by the ANSI/IEEE C37.5-1979, C37.010-1979 & C37.04-1979 breaker rating methods.

For this generator interconnection, no breakers were found to exceed their interrupting capability after the addition of the Customer's 100 MW generation and related facilities. OG&E found no breakers that exceeded their interrupting capabilities on their system. Therefore, there is no short circuit upgrade costs associated with the Gen-2025-SR22 interconnection.

Table 1: Required Interconnection Network Upgrade Facilities

Facility	ESTIMATED COST (2025 DOLLARS)
Lead time	6 months
OKGE – Interconnection Facilities - Add revenue metering at the 34.5kV injection point for the Solar generating	\$80,000
OKGE – Network Upgrades	No additional network upgrades
OKGE – Land or ROW	No Additional ROW
Total	\$80,000

Prepared by Rhiannon Hensley
Senior Engineer, Transmission Planning
OG&E Electric Services

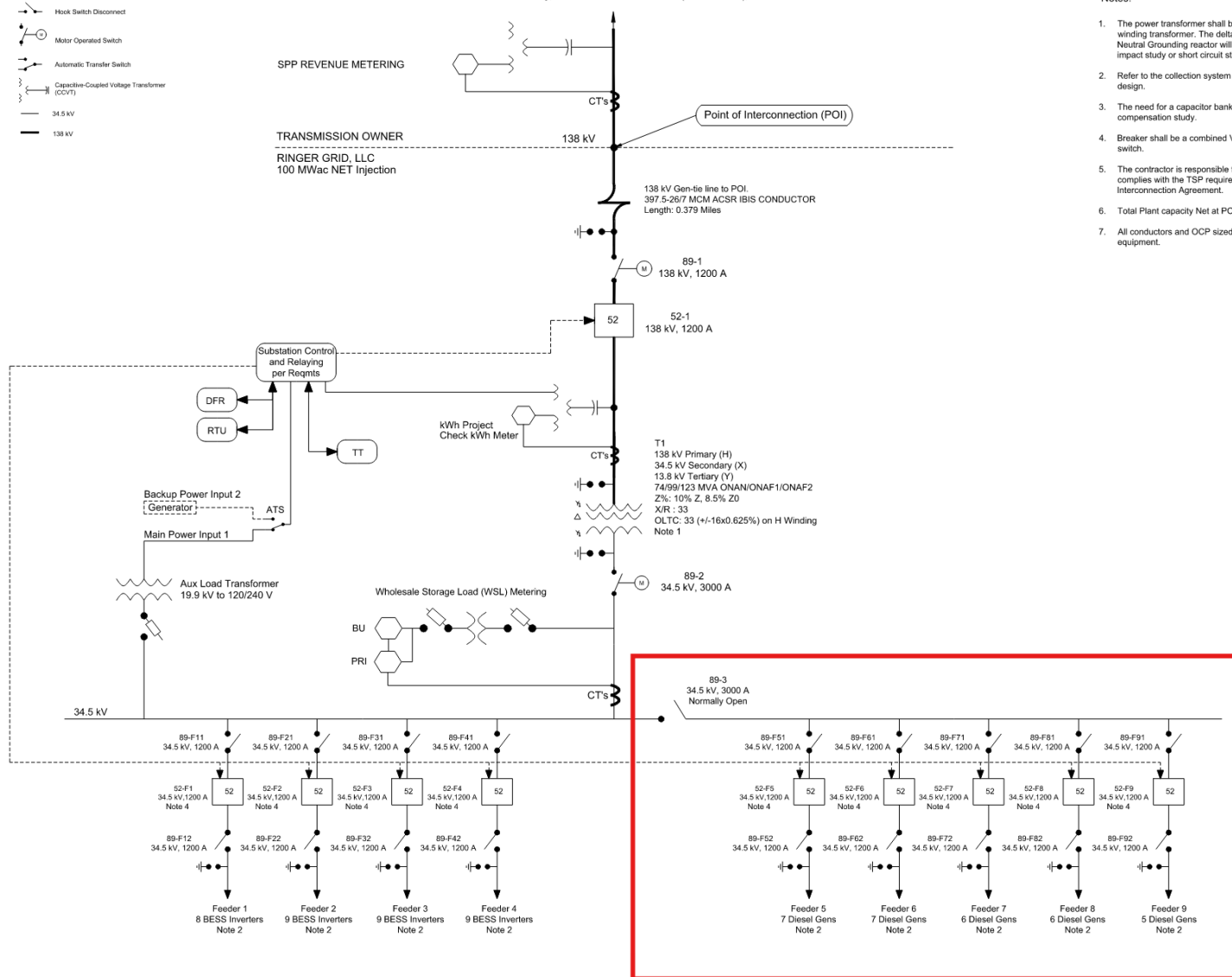
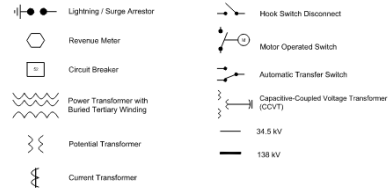
November 6, 2025

Reviewed by:
Adam Snapp, P.E.
Manager, Transmission Planning

Ringer Grid Substation

POI: Oklahoma County, Horseshoe Lake Substation (bus# 762647), 138 kV

LEGEND



Notes:

1. The power transformer shall be a Y (GND) -Y(GND) Delta three winding transformer. The delta tertiary shall be buried and grounded. Neutral Grounding reactor will be determined by the results of an impact study or short circuit study
2. Refer to the collection system one-line diagram for more details on the design.
3. The need for a capacitor bank will be determined by a reactive power compensation study.
4. Breaker shall be a combined Vacuum Circuit Breaker and grounding switch.
5. The contractor is responsible for ensuring that the final design complies with the TSP requirements as set in the signed Interconnection Agreement.
6. Total Plant capacity Net at POI for Bison Grid is 100MW.
7. All conductors and OCP sized TBD on specific site conditions and equipment.